

# uno/duo/quad GSM PCI

Productsheet

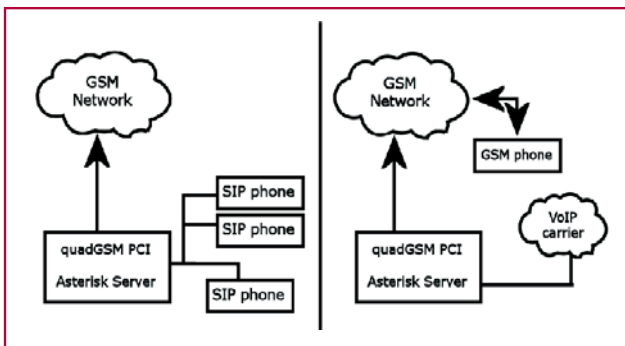
## Junghanns.NET

The Junghanns.NET GSM PCI series cards provide scalable connectivity to GSM networks for your Linux machine. It comes with fully GPLed drivers for the Linux 2.4.X and 2.6.X kernels. Multiple Junghanns.NET GSM PCI series cards can be interconnected over an external PCM bus. The card's active channel switching capability (to bridge voice channels on the card without latency and not using the host CPU) is also working over the external PCM bus (e.g. voice channels on different cards can be actively switched). The Junghanns.NET GSM PCI series cards can be connected to any other Junghanns.NET card to build a real TDM switched PBX.

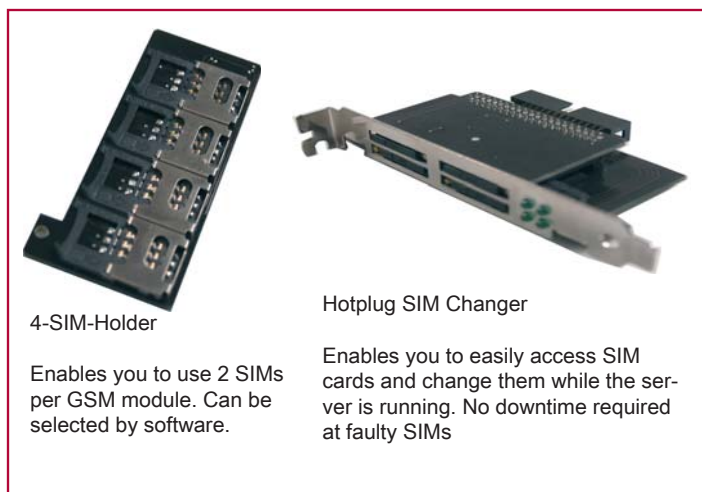


Application 1: GSM SIP gateway

Application 2: GSM callback services



### Additional Accesories



4-SIM-Holder

Enables you to use 2 SIMs per GSM module. Can be selected by software.

Hotplug SIM Changer

Enables you to easily access SIM cards and change them while the server is running. No downtime required at faulty SIMs

### Target applications

- GSM connectivity for PBX
- mobile PBX
- GSM VoIP gateway
- SMS gateway
- GSM callback services

### Features

- 1, 2 or 4 GSM dualband channels (quadband available soon)
- 1 SIM card per GSM channel
- optional SIM expansion boards available (2 SIM per channel, swappable during operation)
- DIGITAL audio quality (noise suppression, echocancel)
- fast call setup
- DTMF detection
- GSM data connections
- GPRS data connections
- PCM bus connectors daisy chaining of max. 8 cards
- 4 dual-color LEDs (network state indicators)
- active channel switching (across multiple cards over the external PCM bus)
- suitable for 3.3 volts and 5.0 volts 32 bit PCI slots

### Requirements

- CPU 500+ MHz
- RAM 64+ MB
- Linux 2.4.X or 2.6.X Kernel (2.6.X recommended)
- 32bit PCI Version 2.2 slot

©opyright 2006 Junghanns.NET GmbH, Allrights reserved